



SAMPLE PAPER

International Olympiad Foundation

EXCELLENCE IN EDUCATION

International Olympiad Foundation

14+

OLYMPIADS

MCQ

FORMAT

0

NEGATIVE MARKS

OLYMPIAD

Mathematics Olympiad

International Olympiad Foundation (IOF) · www.iof.education

CLASS / GRADE

Class 1

SUBJECT

IFMO

DURATION

60 Min

MAX MARKS

35

GENERAL INSTRUCTIONS

- All questions are Multiple Choice Questions (MCQs) with options A, B, C, D, E
- Each correct answer carries 1 mark. No negative marking for wrong answers.
- Rough work should be done separately. Do not write on question paper.

PAPER HIGHLIGHTS

- **Multiple Choice Questions (MCQ)**
Five options per question (A, B, C, D, E). Select the single most appropriate answer.
- **No Negative Marking**
1 mark per correct answer. Zero deductions — attempt every question.
- **Conducted by IOF**
International Olympiad Foundation — fostering excellence among students across India.

SUBJECTS

- Cyber
- English
- Entrepreneurship
- Mathematics
- Commerce
- Economics
- GK & Current Affairs
- Science
- Western Music
- Sanskrit
- Indian Music
- Hindi
- Reasoning & Aptitude
- Spell Talent

ALL IOF OLYMPIAD PROGRAMMES

IFCO International Foundation Cyber Olympiad	IFEEO International Foundation English Olympiad	IFEnO International Foundation Entrepreneurship Olympiad	IFMO International Foundation Mathematics Olympiad	ICS Institute of Company Secretaries of India Commerce Olympiad	IFEcO International Foundation Economics Olympiad	IFGCO International Foundation General Knowledge & Current Affairs Olympiad
IFSO International Foundation Science Olympiad	IFWMuO International Foundation Western Music Olympiad	IFSaO International Foundation Sanskrit Olympiad	IFIMuO International Foundation Indian Music Olympiad	IFHO International Foundation Hindi Olympiad	IFRAO International Foundation Reasoning & Aptitude Olympiad	IFSTO International Foundation Spell Talent Olympiad

Q1. Arrange the following words in an alphabetical order.

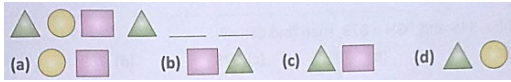
[+1]
[-0]

Donkey, Boat, Animal, Post, Bounce

- A. Donkey, Boat, Animal, Post, Bounce
- B. Animal, Boat, Bounce, Donkey, Post
- C. Animal, Donkey, Post, Boat, Bounce
- D. Donkey, Bounce, Post, Animal, Boat
- E. None of these

Q2. Choose the correct option to complete the pattern.

[+1]
[-0]



- A. (a)
- B. (b)
- C. (c)
- D. (d)
- E. None of these

Q3. Choose the correct option to complete the pattern.

[+1]
[-0]

55550000555__ 000

- A. 55
- B. 00
- C. 50
- D. 05
- E. None of these

Q4. Choose the correct option.

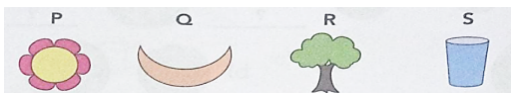
[+1]
[-0]

If $ABC = 123$ and $GHI = 789$ then find EFG ?

- A. 234
- B. 456
- C. 678
- D. 567
- E. None of these

Q5. Which of the following is odd one out?

[+1]
[-0]



- A. P
- B. Q
- C. R
- D. S.
- E. None of these

Q6. Choose the letter which is second last from the right end.

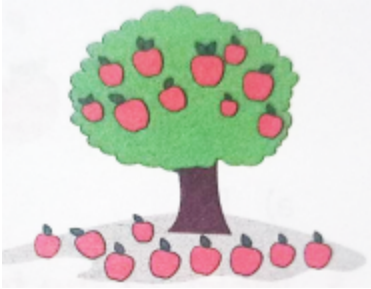
[+1]
[-0]

A B C D E F G

- A. G
- B. F
- C. B
- D. A .
- E. None of these

Q7. How many apples are under the tree?

[+1]
[-0]



- A. 10.
- B. 9.
- C. 11.
- D. 12 .
- E. None of these

Q8. Identify the type of pattern given below.

[+1]
[-0]

122333122333122333

- A. Shape Pattern
- B. Growing Pattern
- C. Repeating Pattern
- D. Colour Pattern
- E. None of these

Q9. Which of the following is an incorrect match?

[+1]
[-0]



- A. (a)
- B. (b)
- C. (c)
- D. (d)
- E. None of these

Q10. Which of the following shape(s) is above the rectangle?

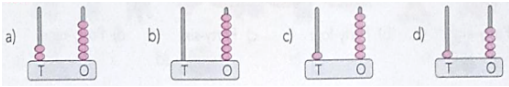
[+1]
[-0]



- A. Triangle
- B. Circle
- C. Rectangle
- D. Square
- E. None of these

Q11. Which of the following abacus represents a number greater than 15 but less than 20?

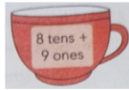
[+1]
[-0]



- A. (a)
- B. (b)
- C. (c)
- D. (d)
- E. None of these

Q12. Which of the following statements is true for the number written on the cup?

[+1]
[-0]



- P. The face value of digit at tens place is smaller than that of ones place.
- Q. The place value of digit at ones place is greater than the place value of digit at tens place.

- A. only P
- B. only Q
- C. Both P and Q
- D. Neither P nor Q
- E. None of these

Q13. Select the sequence which is correctly completed by skipping 4.

[+1]
[-0]

- A. 26, 31, 36, 41, 46
- B. 27, 31, 35, 39, 43
- C. 20, 24, 28, 30, 34
- D. 22, 25, 28, 31, 34
- E. None of these

Q14. If you count numbers from 25 to 35 in reverse, what will come just before 26 in the backward counting?

[+1]
[-0]

- A. 25
- B. 27
- C. 24
- D. 34
- E. None of these

Q15. Which of the following is the correct arrangement (in ascending order) of numbers given below?

[+1]
[-0]



- A. $P < Q < R < S$
- B. $Q < R < S < P$
- C. $P < S < R < Q$
- D. $P < R < S < Q$

- A. A
- B. B
- C. C
- D. D
- E. None of these

Q16. Meera is 15 years old, Riya is 24 years older than Meera. What is the total age of Riya and Meera?

[+1]
[-0]

- A. 34 years
- B. 54 years
- C. 30 years
- D. 39 years
- E. None of these

Q17. Choose the correct option.

[+1]
[-0]

What values for  and  make both number sentence true?

$$4 + \text{circle} = 9$$
$$\text{square} + \text{circle} = 11$$

- (a) $\text{circle} = 4$ and $\text{square} = 7$
- (b) $\text{circle} = 5$ and $\text{square} = 6$
- (c) $\text{circle} = 4$ and $\text{square} = 6$
- (d) $\text{circle} = 3$ and $\text{square} = 5$

- A. (a)
- B. (b)
- C. (c)
- D. (d)
- E. None of these

Q18. Which of the following statements is true?

[+1]
[-0]

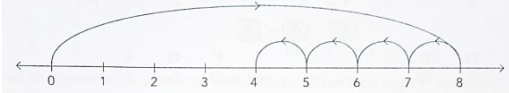
P. $58 + 2$ is greater than $49 + 10$

Q. $23 + 45$ is less than $35 + 24$

- A. Only P
- B. Only Q
- C. Both P and Q
- D. Neither P nor Q
- E. None of these

Q19. Which of the following is represented by the given number line?

[+1]
[-0]



- A. 4 less than 8
- B. 8 decreased by 4
- C. From 8 take away 4
- D. All of these
- E. None of these

Q20. Which of the following has the value less than '27' ?

[+1]
[-0]

(a) 62 ones - 20 ones	(b) 4 tens 2 ones - 3 tens
(c) 3 tens 2 ones - 2 ones	(d) 5 tens 9 ones - 3 tens 2 ones

- A. (a)
- B. (b)
- C. (c)
- D. (d)
- E. None of these

Q21. Find the value of P and Q to make the given subtraction true.

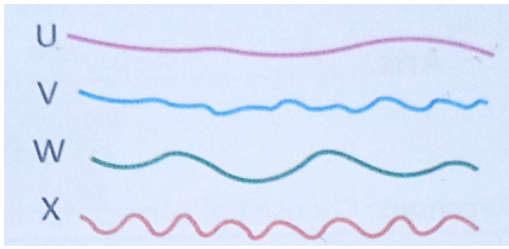
[+1]
[-0]

$$9 - \boxed{P} = \boxed{Q}$$

- A. $P = 5, Q = 5$
- B. $P = 4, Q = 4$
- C. $P = 5, Q = 4$
- D. $P = 6, Q = 2$
- E. None of these

Q22. Look at the given ropes. Rope _____ is the shortest rope and rope _____ is the longest rope respectively.

[+1]
[-0]



- A. U, W
- B. U, X
- C. X, U
- D. W, X
- E. None of these

Q23. How many objects can both roll and slide?

[+1]
[-0]



- A. 1
- B. 2
- C. 3
- D. 4
- E. None of these

Q24. Choose the correct option.

[+1]
[-0]



The given figure is formed using _____

- A. Triangle and Rectangle
- B. Triangle, Rectangle, Circle and square
- C. Circle, Square and Triangle
- D. Rectangle and Circle
- E. None of these

Q25. Choose the correct option.

[+1]
[-0]

An apple is heavier than a _____ and lighter than a _____ respectively.



- A. Mango, Banana
- B. Banana, Mango
- C. Neither A nor B
- D. Can't be determined
- E. None of these

Q26. Which of the following is incorrect match?

[+1]
[-0]



- A. a)
- B. b)
- C. c)
- D. d)
- E. None of these

Q27. Which of the following dates is the 4th Wednesday of February 20xx?

[+1]
[-0]

FEBRUARY 20XX						
Sun	Mon	Tue	Wed	Thu	Fri	Sat
			1	2	3	4
5	6	7	8	9	10	11
12	13	14	15	16	17	18
19	20	21	22	23	24	25
26	27	28				

- A. 1st February
- B. 15th February
- C. 22nd February
- D. 23rd February
- E. None of these

Q28. If day before yesterday was Monday then tomorrow will be _____ .

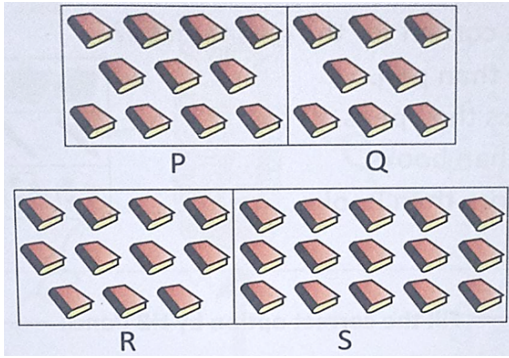
[+1]
[-0]

- A. Wednesday
- B. Thursday
- C. Tuesday
- D. Friday
- E. None of these

Q29. Look at the picture and answer the following question.

[+1]
[-0]

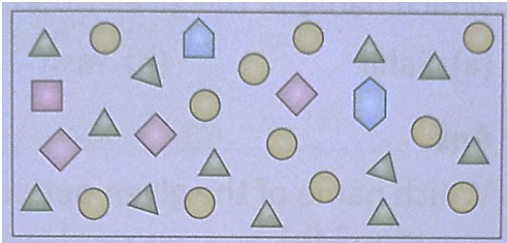
Set ___ has 7 fewer books than set ____ .



- A. P, S
- B. Q, S
- C. Q, R
- D. R, S
- E. None of these

Q30. How many more triangles than squares are there in the given figure?

[+1]
[-0]



- A. Thirteen
- B. Eight
- C. Fifteen
- D. Twelve
- E. None of these

Q31. In a library there are 55 books in a shelf. A librarian added 13 books to the shelf on day1. On day 2 he removed 31 books. How many books will be there after day2?

[+1]
[-0]

- A. 68
- B. 37
- C. 24
- D. 30
- E. None of these

Q32. Which of the following is the correct arrangement of P, Q, R and S in ascending order?

[+1]
[-0]



- A. $S < Q < P < R$
 B. $R < Q < P < S$
 C. $S < P < Q < R$
 D. $P < Q < R < S$

- A. A
 B. B
 C. C
 D. D
 E. None of these

Q33. Match the columns:

[+1]
[-0]

	Column P		Column Q
P	21 more than 15	a	78
Q	17 added to 22	b	77
R	30 increased by 47	c	39
S	28 + 50	d	36

	P	Q	R	S
1	d	c	a	b
2	c	a	d	b
3	d	c	b	a
4	c	b	a	d

- A. 1
 B. 2
 C. 3
 D. 4
 E. None of these

Q34. After coming back from shopping Ms. Lucy is left with the following money. What is the total value of the money with her?

[+1]
[-0]

₹20 , 25p, 10p, ₹15. 50p, ₹30

- A. ₹ 40, 50 p
 B. ₹ 65, 25 p
 C. ₹ 50, 85 p
 D. ₹ 65, 85 p
 E. None of these

Q35. Observe the pattern and fill in the missing numbers.

[+1]
[-0]

8	7	6	5
?	?	?	?
6	5	4	3
5	4	3	2

- A. 4 5 6 7
- B. 7 6 5 4
- C. 6 5 4 3
- D. 6 7 4 5
- E. None of these



CLASS / GRADE

Class 1

SUBJECT

IFMO

TOTAL QUESTIONS

35

MAX MARKS

35

ANSWER SHEET — 35 QUESTIONS

Q.NO	ANSWER	Q.NO	ANSWER	Q.NO	ANSWER	Q.NO	ANSWER	Q.NO	ANSWER
01	B	08	C	15	C	22	B	29	B
02	A	09	C	16	B	23	B	30	B
03	C	10	A	17	B	24	B	31	B
04	D	11	C	18	A	25	B	32	C
05	D	12	A	19	D	26	D	33	C
06	C	13	B	20	B	27	C	34	D
07	B	14	B	21	C	28	B	35	B

◆ ALL IOF OLYMPIAD PROGRAMMES ◆

IFCO International Foundation Cyber Olympiad	IFEEO International Foundation English Olympiad	IFEnO International Foundation Entrepreneurship Olympiad	IFMO International Foundation Mathematics Olympiad	ICS Institute of Company Secretaries of India Commerce Olympiad	IFEcO International Foundation Economics Olympiad	IFGCO International Foundation General Knowledge & Current Affairs Olympiad
IFSO International Foundation Science Olympiad	IFWMuO International Foundation Western Music Olympiad	IFSaO International Foundation Sanskrit Olympiad	IFIMuO International Foundation Indian Music Olympiad	IFHO International Foundation Hindi Olympiad	IFRAO International Foundation Reasoning & Aptitude Olympiad	IFSTO International Foundation Spell Talent Olympiad