



SAMPLE PAPER

International Olympiad Foundation

EXCELLENCE IN EDUCATION

International Olympiad Foundation

14+

OLYMPIADS

MCQ

FORMAT

0

NEGATIVE MARKS

OLYMPIAD

Science Olympiad

International Olympiad Foundation (IOF) · www.iof.education

CLASS / GRADE

Class 3

SUBJECT

IFSO

DURATION

60 Min

MAX MARKS

35

GENERAL INSTRUCTIONS

- All questions are Multiple Choice Questions (MCQs) with options A, B, C, D, E
- Each correct answer carries 1 mark. No negative marking for wrong answers.
- Rough work should be done separately. Do not write on question paper.

PAPER HIGHLIGHTS

- **Multiple Choice Questions (MCQ)**
Five options per question (A, B, C, D, E). Select the single most appropriate answer.
- **No Negative Marking**
1 mark per correct answer. Zero deductions — attempt every question.
- **Conducted by IOF**
International Olympiad Foundation — fostering excellence among students across India.

SUBJECTS

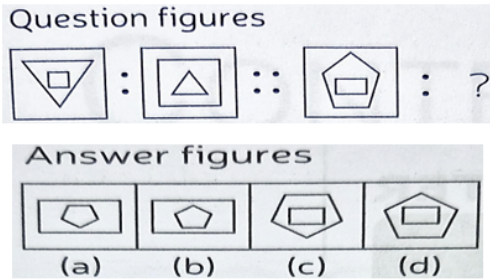
- Cyber English Entrepreneurship Mathematics Commerce Economics GK & Current Affairs Science Western Music
Sanskrit Indian Music Hindi Reasoning & Aptitude Spell Talent

ALL IOF OLYMPIAD PROGRAMMES

IFCO International Foundation Cyber Olympiad	IFEOL International Foundation English Olympiad	IFEnO International Foundation Entrepreneurship Olympiad	IFMO International Foundation Mathematics Olympiad	ICS Institute of Company Secretaries of India Commerce Olympiad	IFEcO International Foundation Economics Olympiad	IFGCO International Foundation General Knowledge & Current Affairs Olympiad
IFSO International Foundation Science Olympiad	IFWMuO International Foundation Western Music Olympiad	IFSaO International Foundation Sanskrit Olympiad	IFIMuO International Foundation Indian Music Olympiad	IFHO International Foundation Hindi Olympiad	IFRAO International Foundation Reasoning & Aptitude Olympiad	IFSTO International Foundation Spell Talent Olympiad

Q1. Choose the figure which will complete the second pair in the same way as first pair:

[+1]
[-0]



- A. (a)
- B. (b)
- C. (c)
- D. (d)
- E. None of these

Q2. Choose the option which will complete the second pair in the same way as first pair.

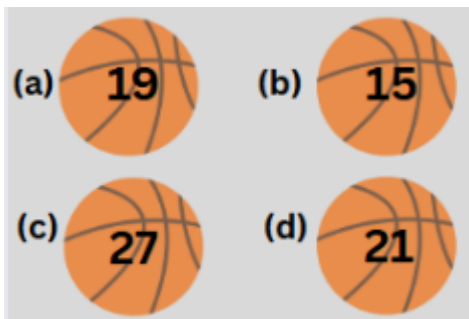
[+1]
[-0]

Hong Kong : China :: Vatican : ?

- A. Mexico
- B. Canada
- C. Rome
- D. Sweden
- E. None of these

Q3. In a sports room, four basketballs were kept. Rahul went to the sports room and chose a basketball which was different from others. Which basketball did Rahul choose?

[+1]
[-0]



- A. (a)
- B. (b)
- C. (c)
- D. (d)
- E. None of these

Q4. Which letter will continue the series.

[+1]
[-0]

C, F, I, L, O, ?

- A. P
- B. R
- C. Q
- D. N
- E. None of these

Q5. Which one will be the correct sequence of the given words in meaningful order?

[+1]
[-0]

1. Frog 2. Grass 3. Snake 4. Grass hopper

- A. 1432
- B. 3421
- C. 2413
- D. 4321
- E. None of these

Q6. If air is called green, green is called blue, blue is called purple, purple is called yellow, yellow is called water and water is called pink, then what is the colour of clear sky?

[+1]
[-0]

- A. Blue
- B. Purple
- C. Yellow
- D. Water
- E. Pink

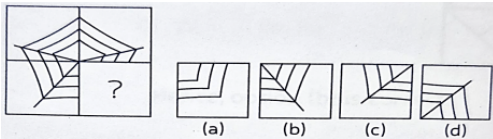
Q7. Heena walks towards East, after travelling some distance she takes a left turn and again after travelling some distance she turns to left. In which direction she is facing now?

[+1]
[-0]

- A. North
- B. East
- C. West
- D. South
- E. None of these

Q8. Complete the pattern of the spider web.

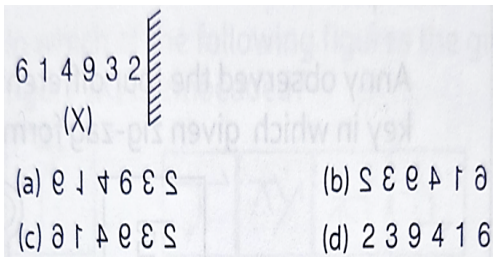
[+1]
[-0]



- A. (a)
- B. (b)
- C. (c)
- D. (d)
- E. None of these

Q9. A number '614932' is written on the wall. How will it appear in the mirror, if the mirror is on the right side?

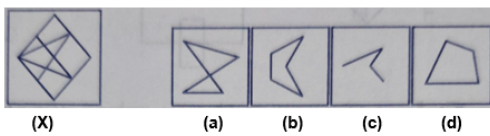
[+1]
[-0]



- A. (a)
- B. (b)
- C. (c)
- D. (d)
- E. None of these

Q10. Identify the option (part) which is exactly hidden in the problem figure(X).

[+1]
[-0]



- A. (a)
- B. (b)
- C. (c)
- D. (d)
- E. None of these

Q11. Nitesh wished to make water from ice. So, he started heating ice cubes on gas stove. His mother asked him to put ice cubes in the Sun instead. This saves fuel and creates no pollution. What value do you acquire ?

[+1]
[-0]

- A. Wise use of ice
- B. Wise use of gas stove
- C. Wise use of Sun's energy
- D. Wise use of water
- E. None of these

Q12. Study the characteristics of P, Q, R and S in the given table.

[+1]
[-0]

S. NO	Ability to move from place to place	Needs Water	Reproduces	Has Legs
P	√	√	√	X
Q	X	√	√	X
R	√	√	√	√
S	X	√	X	X

Which of the following could be Banyan tree and Lion respectively?

- A. S and P
- B. Q and P
- C. Q and R
- D. S and R
- E. None of these

Q13. The birds which can walk over shallow water are called wading birds. Which of the following claws are they most likely to have?

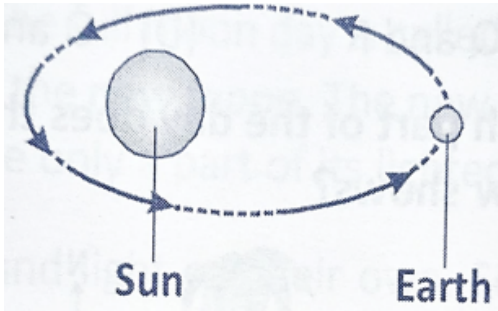
[+1]
[-0]

- A. Two toes pointing upwards and two toes pointing downwards.
- B. Two toes in the front and one hind toe at the back.
- C. Webbed feet with skin between their toes.
- D. Thin, long legs with toes that spread wide.
- E. None of these

Q14. The figure given below shows the movement of the Earth around the sun.

[+1]
[-0]

The motion of the Earth around the Sun affects the _____ .



- A. timing of tides
- B. length of a month
- C. cycle of seasons
- D. phases of the moon
- E. None of these

Q15. Match the organ systems in column-I with their functions in column-II.

[+1]
[-0]

	Column-I		Column-II
P	Circulatory system	i	Helps in producing young ones
Q	Muscular system	ii	Helps the body to move
R	Reproductive system	iii	Helps in the movement of blood
S	Respiratory system	iv	Helps in the exchange of air

	P	Q	R	S
a	iii	iv	i	ii
b	iii	ii	i	iv
c	iv	iii	ii	i
d	iii	i	iv	ii

- A. a
- B. b
- C. c
- D. d
- E. None of these

Q16. Muscles in our body _____ .

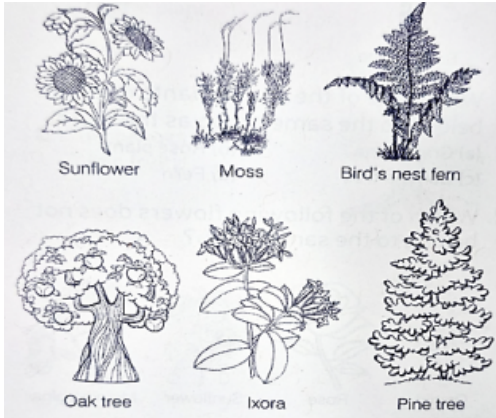
[+1]
[-0]

- (i) Make our bones move.
- (ii) work in pairs
- (iii) can become stronger through exercising .
- (iv) cannot stretch but can expand

- A. only(i) and (iii)
- B. only (i), (ii) and (iii)
- C. only(ii), (iii) and (iv)
- D. (i), (ii), (iii) and (iv)
- E. None of these

Q17. Out of the following plants/trees which are non-flowering?

[+1]
[-0]



- A. Moss, Ixora, Oak tree
- B. Moss, Bird's nest fern, Pine tree
- C. Oak tree, Pine tree, Ixora
- D. Bird's nest fern, Moss, Ixora
- E. None of these

Q18. The diagram below shows a fish and A, B, C and D are its body parts.

[+1]
[-0]

The following table relates the mentioned body parts to their functions. Which one of the following is incorrect?

	Body part	Function
a	A	Used for respiration
b	B	Lays eggs for reproduction
c	C	Helps to swim
d	D	Helps it to propel forward

- A. a
- B. b
- C. c
- D. d
- E. None of these

Q19. Take two potted plants. Watering one of the potted plants with normal water and the other plant with salt water for about a week. Observe the plant after a week. What will you notice?

[+1]
[-0]

- A. Both the plants are in good and healthy conditions.
- B. Both the plants has become thin and dry.
- C. The plant with salt water is in good condition.
- D. The plant with normal water is in good condition and the plant watered with salt water has become thin and dry.
- E. None of these

Q20. Consider the following functions.

[+1]
[-0]

Movement, Running, Support, Protection, Shape, Blood Cells Protection.

The functions are part of which system.

- A. Muscular system
- B. Nervous system
- C. Circulatory system
- D. Skeletal system
- E. None of these

Q21. Read the following statements and choose the correct option.

[+1]
[-0]

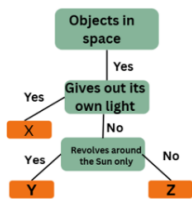
Statement X : Non-renewable resources are unlimited in quantity.

Statement Y : There is a never ending supply of non-renewable resources in nature.

- A. Statement X is correct and Y is incorrect.
- B. Statement Y is correct and X is incorrect.
- C. Both the statements are correct.
- D. Both the statements are incorrect.
- E. None of these

Q22. Refer to the given flow chart and select the correct option.

[+1]
[-0]



	X	Y	Z
a	Moon	Sun	Earth
b	Star	Earth	Moon
c	Earth	Star	Moon
d	Sun	Moon	Earth

- A. a
- B. b
- C. c
- D. d
- E. None of these

Q23. Guess my name .

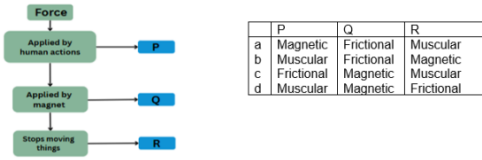
[+1]
[-0]

I am a group of stars that can be seen only in night sky. When seen in the night sky I look like a great bear. Who am I ?

- A. Star
- B. Milky way galaxy
- C. Comet
- D. Constellation
- E. None of these

Q24. Identify P, Q, R from the given flowchart.

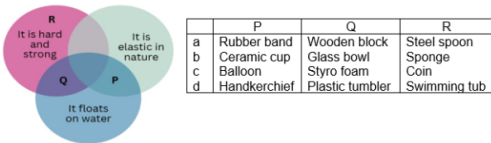
[+1]
[-0]



- A. a
- B. b
- C. c
- D. d
- E. None of these

Q25. Study the given Venn diagram and select the correct option of P, Q and R

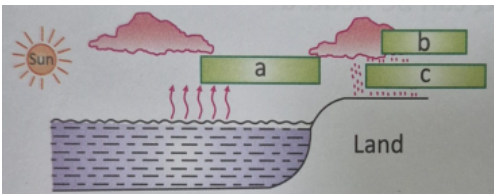
[+1]
[-0]



- A. a
- B. b
- C. c
- D. d
- E. None of these

Q26. The given diagram represents the water cycle. Select the correct option regarding the processes that are labeled as 'a', 'b' and 'c'.

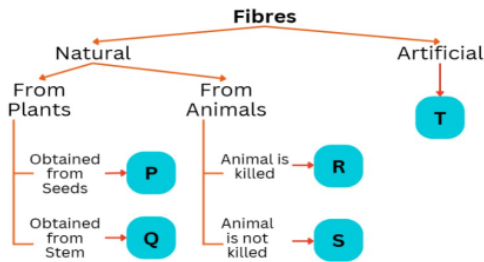
[+1]
[-0]



- A. In processes 'a' and 'b', one state of water changes into another state.
- B. In process 'a', the state of water with fixed volume changes to the state of water which does not have fixed volume.
- C. In process 'c', liquid or solid state of water may fall on Earth's surface.
- D. All of these
- E. None of these

Q27. Refer to the given flowchart and select the correct option.

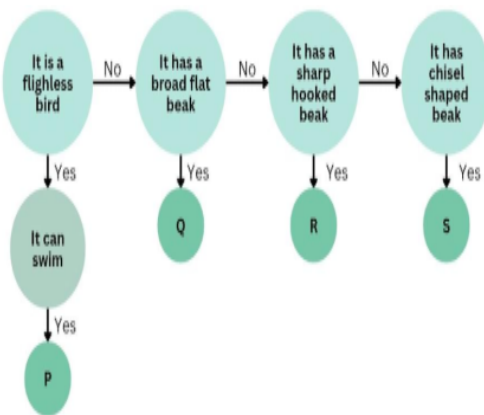
[+1]
[-0]



- A. P – Jute, Q-Cotton
- B. R – Silk, S - Cotton
- C. S – Wool, T - Rayon
- D. P – Wool, S - Silk
- E. None of these

Q28. Refer to the given flow chart and select the INCORRECT option regarding P, Q, R and S.

[+1]
[-0]



- A. Both P and Q have webbed feet and P lives in a very cold region of Earth.
- B. R is a predatory bird that makes nest called eyries on branches of tall trees or on rocks.
- C. Both Q and R have three toes in front and one toe at the back.
- D. S has long legs and spread out toes that help it to wade through water.
- E. None of these

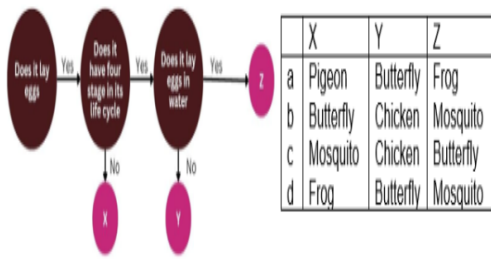
Q29. What would happen if all the toes of a woodpecker were pointed in the same direction?

[+1]
[-0]

- A. It will not be able to climb up the tree and hold on to its trunk.
- B. It will not be able to make its nest on the ground with stones and pebbles.
- C. It will not be able to use its feet like oars in water.
- D. It will not be able to use its toes to scratch the ground to dig out worms.
- E. None of these

Q30. Based on the given flow chart, what could animals X, Y and Z be?

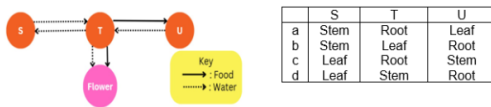
[+1]
[-0]



- A. a
- B. b
- C. c
- D. d
- E. None of these

Q31. The diagram below shows how food and water are transported in a plant. Identify S, T and U.

[+1]
[-0]

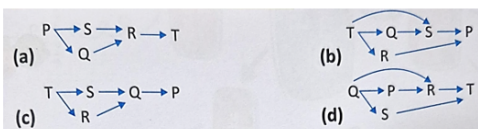


- A. a
- B. b
- C. c
- D. d
- E. None of these

Q32. The given table classifies five organisms on the basis of their food habits. Which of the following food web correctly shows the food relationship among these organisms?

[+1]
[-0]

Producer	T
Herbivore	Q, R
Carnivore	P
Omnivore	S

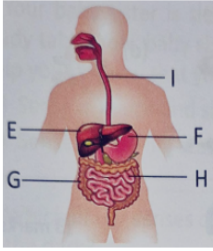


- A. (a)
- B. (b)
- C. (c)
- D. (d)
- E. None of these

Q33. Study the given figure and identify which of the labelled parts:

[+1]
[-0]

- (i) secretes digestive juices
- (ii) Contains semi-solid wastes called faeces.

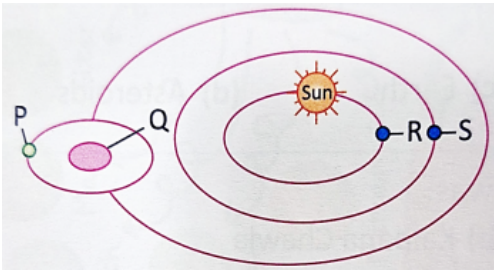


	(i)	(ii)
a	E	H
b	F	G
c	F	H
d	I	G

- A. a
- B. b
- C. c
- D. d
- E. None of these

Q34. Refer the given diagram of a part of the solar system. Identify the natural satellite in it.

[+1]
[-0]



- A. R
- B. P
- C. Q
- D. S
- E. None of these

Q35. Read the clues and fill in the correct word.

[+1]
[-0]

- P. The change of water into water vapors.
- Q. The change of water vapors into water.

	P	Q
a	Cooling	Boiling
b	Freezing	Heating
c	Evaporation	Condensation
d	Condensation	Evaporation

- A. a
- B. b
- C. c
- D. d
- E. None of these



CLASS / GRADE

Class 3

SUBJECT

IFSO

TOTAL QUESTIONS

35

MAX MARKS

35

ANSWER SHEET — 35 QUESTIONS

Q01-Q07	ANS	Q08-Q14	ANS	Q15-Q21	ANS	Q22-Q28	ANS	Q29-Q35	ANS
Q01	A	Q08	B	Q15	B	Q22	B	Q29	A
Q02	C	Q09	B	Q16	B	Q23	D	Q30	A
Q03	A	Q10	C	Q17	B	Q24	D	Q31	D
Q04	B	Q11	C	Q18	B	Q25	A	Q32	B
Q05	C	Q12	C	Q19	D	Q26	D	Q33	C
Q06	B	Q13	D	Q20	D	Q27	C	Q34	B
Q07	C	Q14	C	Q21	D	Q28	C	Q35	C

◆ ALL IOF OLYMPIAD PROGRAMMES ◆

